

# GENERAL NOTES

All lights must have color frames, barn doors and working shutters.

Audience lights are needed but not drawn on the LX plot.

Full range speaker x 5 (2 on stands / 2 hung / 1 on floor.)

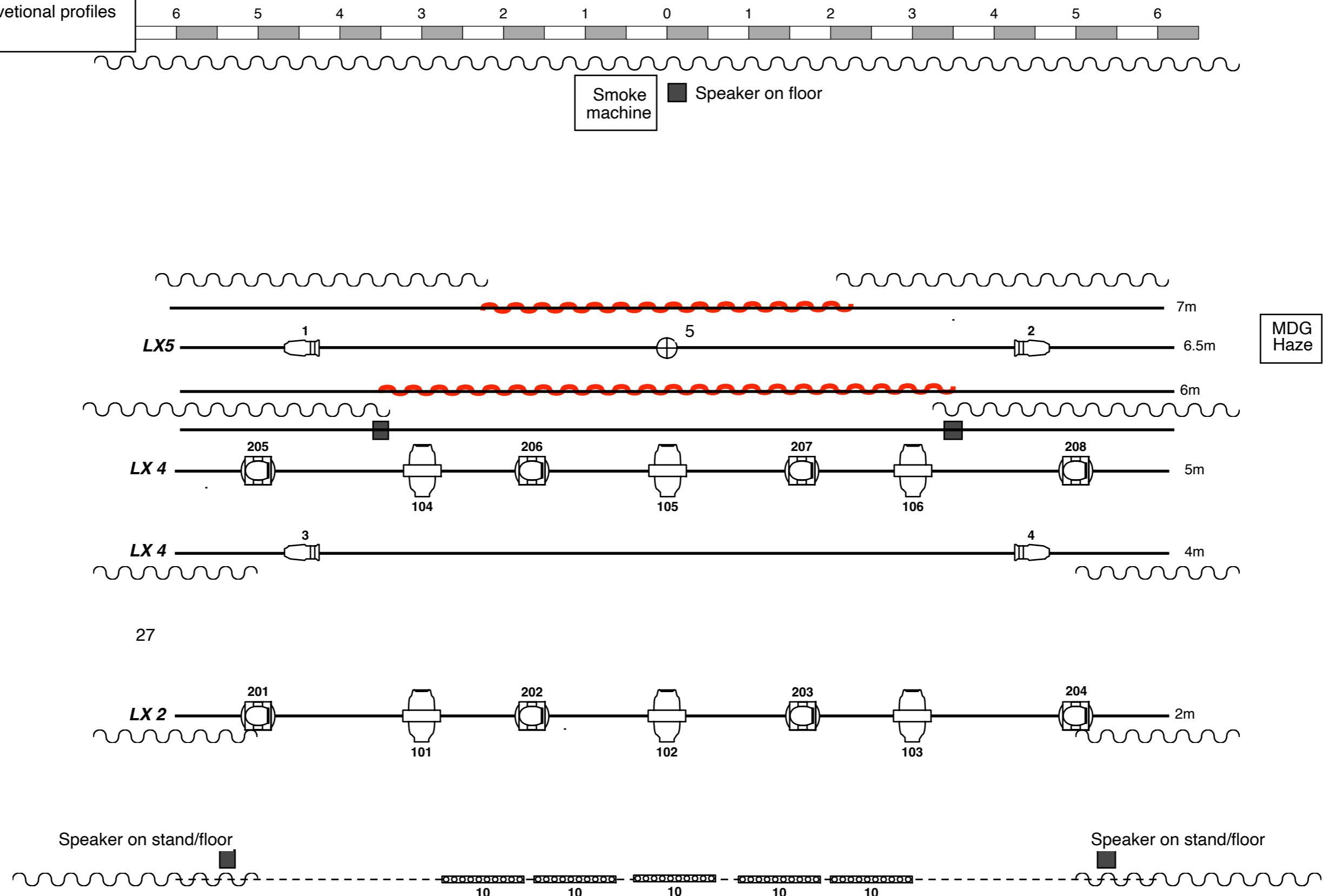
The 2 hung speakers should hang at about 4 meters

PA system hung to suit the venue.

Moving profiles can be Martin Encore Performance CLD or similar

Moving wash can be Martin Encore Wash CLD or similar

3 of the Moving Profiles can be substituted with 6 conventional profiles



## Light Plot

### THE CELLO

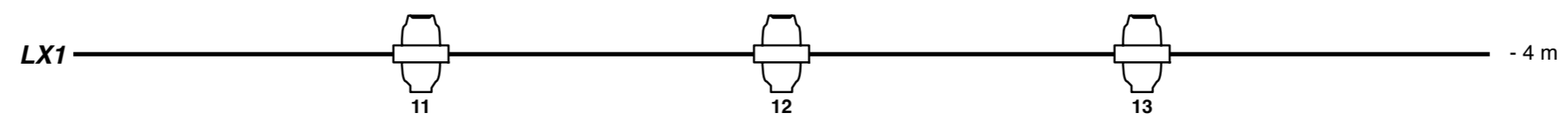
JO STRØMGREN KOMPANI

Designer:

Jo Strømgren

2026

## AUDIENCE



## Key



Showtec Sunstrip x5

Zoom profile 25-50° x 4

Special Lightbulb x 1

Moving Profile x 9

Moving Wash x 8