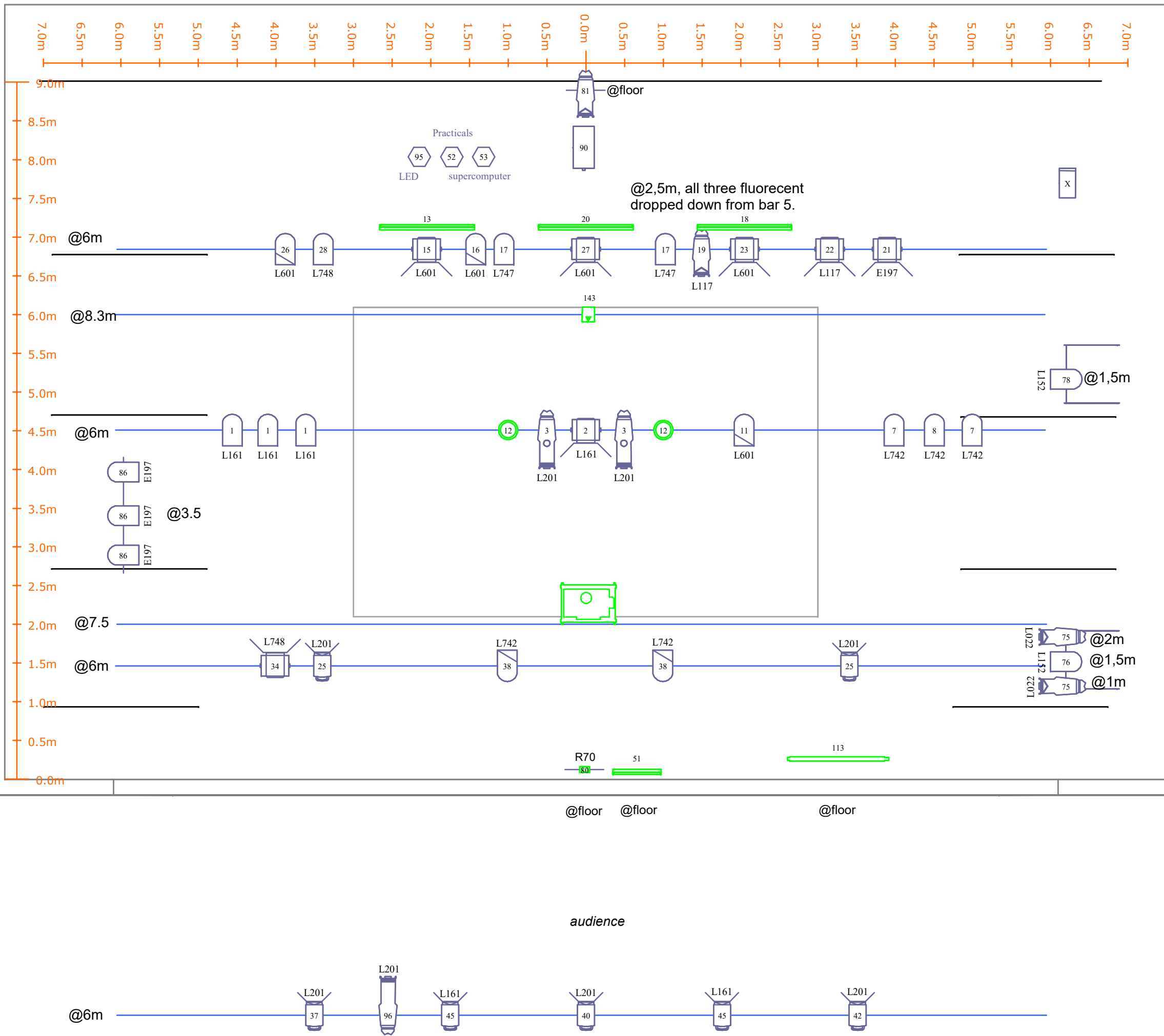


The Virus

Jo Strømgren Kompani

1:50 @ A3

Lighting designer: Eirik Brenne Torsethaugen



| Count | Symbol | Name | Notes |
|-------|--------|---------------------------------------|--|
| 7 | | 2 kw PC or fresnel with barndoors | |
| 7 | | 1 kw PC or fresnel with barndoors | |
| 14 | | PAR 64, CP 62 | |
| 5 | | PAR 64, CP 61 | |
| 2 | | Source 4 - 15/30 Zoom with iris | |
| 1 | | Source 4 - 15/30 Zoom | |
| 4 | | Source 4 - 25/50 Zoom | |
| 1 | | Hazer | A high quality hazer |
| 1 | | Fogger/Smoke machine | Able to bring a fast, big burst of smoke |
| 2 | | 400W UV canon | Travels with the company. These are heavy, so we would prefer presenter to provide them. |
| 1 | | 0.5 m UV tube | Travels with the company |
| 3 | | 1.2 m Fluorescent tube | Travels with the company. Dropped down with ropes that we bring @2,50m |
| 1 | | Showtec active sunstrip | Travels with the company |
| 1 | | Beamz Pro Pango 1250 Analog RGB laser | Travels with the company |
| 1 | | 500w floodlight | Travels with the company |
| 1 | | NEC PA622U-WUXGA, 6200ANSI projector | Travels with the company together with 70m CAT6 |

- All fixtures on single dim if possible, 37 in the ceiling/11 on stage (minimum 29 in the ceiling/11 on stage) and 5 hot power, distributed as follows:

- FOH: 6 dim (min.5)
- Bar 1: 5 dim (min.3)
- Bar 2: 1 hot for projector
- Bar 3: 12 dim (min.8)
- Bar 4: 1 hot for laser
- Bar 5: 14 dim (min.13)
- DS: 2 dim + 1 hot for sunstrip
- US: 4 dim + 2 hot for hazer and smoke machine
- SR: 2 dim
- SL: 3 dim

- DMX on bar 2 and 4, DS and US for projector, laser, sunstrip and smoke machines

- All fixtures with safetywires, barndoors, working shutters and colour frames.